



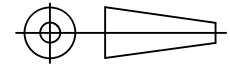
RESOURCE ENIGMECH (INDIA) PVT LTD.  
BARODA - 390010, INDIA.

E MAIL :- info@resource.co.in.  
FAX NO:- +91-265-2638048

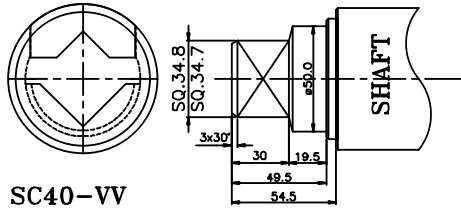
CUSTOMER NAME :-

DATA SHEET NO-30  
FLANGE MOUNTING FOR SC-40

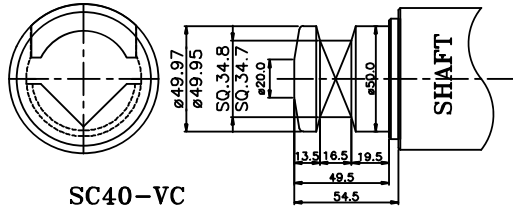
ALL DIMENSION  
IN MM



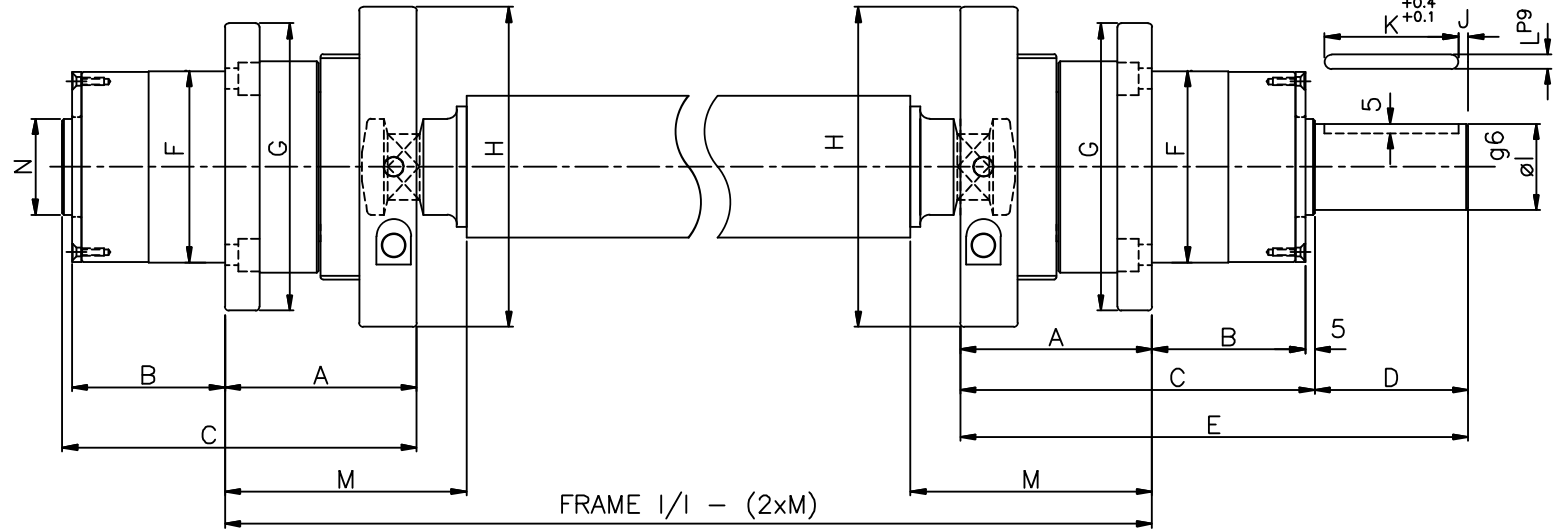
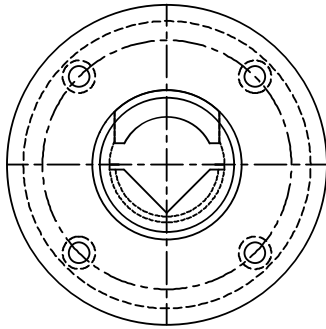
SCALE  
N.T.S.



SC40-VV



SC40-VC



MODEL	A	B	C	D	E	F	G	H	I g6	J	K	L P9	M	N
SC-40	100	80	185	80	265	∅100	∅150	∅167	$\begin{matrix} -0.009 \\ -0.025 \end{matrix}$	5	70	$\begin{matrix} +0.051 \\ -0.015 \end{matrix}$	126	∅50

MODEL	SIZE	QTY.	EQUIPACD ON PCD
SC-40	M10	4	130

**BASIC CUSTOMER FEEDBACK**

PRESENT GRIPPING WIDTH:-	CORE INNER DIAMETER:-
MACHINE NAME:-	COLLAPSED SHAFT DIAMETER:-
MAX GRIPPING WIDTH:-	EXPANDED SHAFT DIAMETER:-
MIN GRIPPING WIDTH:-	SPEED :-
LOAD :-	CORE MATERIAL :-

FOR IMPROVEMENT & MODIFICATION RESOURCE HAS RIGHT TO CHANGE DIMENSION WITHOUT PRIOR NOTICE.



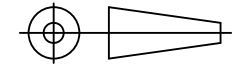
RESOURCE ENGI MECH (INDIA) PVT LTD.  
BARODA - 390010, INDIA.

E MAIL :- info@resource.co.in.  
FAX NO:- +91-265-2638048

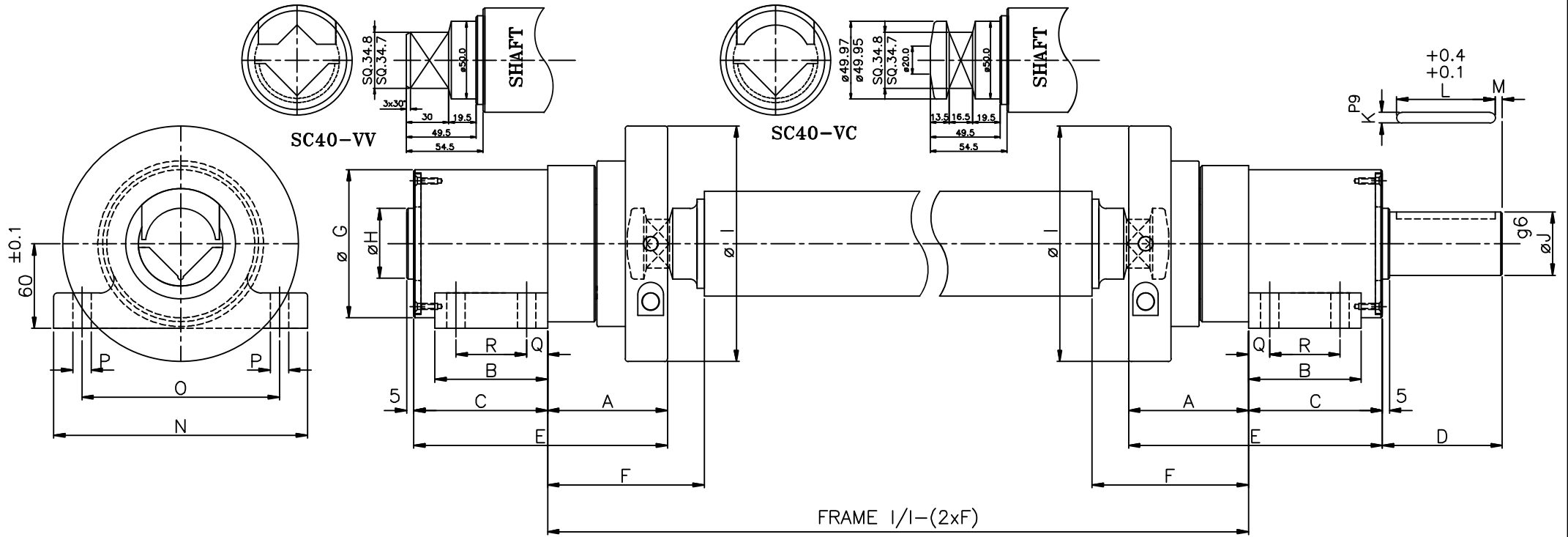
CUSTOMER NAME :-

DATA SHEET NO-31  
FOOT MOUNTING FOR SC-40

ALL DIMENSION  
IN MM



SCALE  
N.T.S.



MODEL	A	B	C	D	E	F	G	H	I	J $g6$	K $P9$	L	M	N	O	P	Q	R
SC-40	85	80	95	85	180	111	$\phi 105$	$\phi 50$	$\phi 167$	$\phi 45$ -0.009 -0.025	10 +0.051 -0.015	70	5	180	140	$\phi 13$	15	50

**BASIC CUSTOMER FEEDBACK**

PRESENT GRIPPING WIDTH:-	CORE INNER DIAMETER:-
MACHINE NAME:-	COLLAPSED SHAFT DIAMETER:-
MAX GRIPPING WIDTH:-	EXPANDED SHAFT DIAMETER:-
MIN GRIPPING WIDTH:-	SPEED :-
LOAD :-	CORE MATERIAL :-

FOR IMPROVEMENT & MODIFICATION RESOURCE HAS RIGHT TO CHANGE DIMENSION WITHOUT PRIOR NOTICE.